

PASSION OF ITALY

ROME

JUNE/JULY 2014

Conducted by

Joshua Habermann



Tour Italy

Individual performances

Combined Festival concert

Sing Mass at St. Peter's Basilica

Options to extend to Florence/Venice





PASSION OF ITALY

with Joshua Habermann

TABLE OF CONTENTS

| | |
|---------------------------------|----|
| Message | 1 |
| Leader | 2 |
| Program | 3 |
| Package Details | 7 |
| Travel Insurance Plan | 8 |
| Producers. | 10 |



Dear friends,

I am thrilled to be leading the Passion of Italy festival in June 2014. The festival focus is in ancient and monumental Rome. Many ensembles will add stops in Tuscany, and the Venice region, taking us to the great centers of Italian culture while offering a multi-faceted experience of this fascinating country. With opportunities for individual performance as well as with the festival choir there are a myriad of options to explore, and of course the food and welcoming spirit of the people make Italy a wonderful destination. I hope you will join us in Italy in June 2014!

Warm regards,

Joshua Habermann



Joshua Habermann

Joshua Habermann has led honor choirs and choral festivals in North and Latin America, Europe and Asia. As a singer (tenor) he has performed with the Oregon Bach Festival Chorus (Eugene, Oregon) and Conspirare (Austin, Texas).

Since 2009 Habermann has been music director of the Santa Fe Desert Chorale, a professional chamber choir with summer and winter seasons in New Mexico. Projects with the Desert Chorale include choral-

orchestral works such as J.S. Bach's Mass in B Minor, Monteverdi's Vespers of 1610, Handel's Dixit Dominus, as well as a cappella masterworks such as Rachmaninov's All Night Vigil, and Copland's In the Beginning with mezzo-soprano Susan Graham.

From 1996-2008 Habermann was assistant conductor of the San Francisco Symphony Chorus, where he prepared the chorus for performances with conductors Michael Tilson Thomas and Charles Dutoit.

From 1996-2008 Habermann was professor of music at San Francisco State University, where under his direction the SFSU Chamber Singers received international engagements in Havana, Cuba, and undertook concert tours in Germany and the Czech Republic, and China. National invitations include the Waging Peace Festival in Eugene, Oregon, multiple appearances at the California Music Educators Convention, and an appearance at the American Choral Directors' Association convention in 2008.

From 2008-2011 Habermann was director of choral studies at the University of Miami Frost School of Music, where he led the graduate program in conducting, and directed the Frost Chorale. During this same period Habermann led the Masterchorale of South Florida in performances of Mendelssohn's Elijah, Haydn's Creation, and Mozart's Requiem.

In 2011-2012 Joshua Habermann begins his tenure as Chorus Director of the Dallas Symphony Chorus, the official vocal ensemble of the Dallas Symphony Orchestra.

A native of California, Joshua Habermann is a graduate of Georgetown University and the University of Texas at Austin, where he completed doctoral studies in conducting with Craig Hella Johnson. He lives in Dallas with his wife Joanna and daughter Kira.

CORE PROGRAM

ROME

Friday, June 27

- Depart U.S.A.
-

Saturday, June 28

- Arrival in Rome
 - Meet Klconcerts tour manager
 - Orientation tour
 - Check in
 - Welcome Dinner
 - Overnight Rome
-

Sunday, June 29

- Breakfast (daily)
- Combined rehearsal
- Guided walking tour of the historical centre of Rome including Trevi Fountain, Spanish Steps, Piazza Navona and Piazza Campo de' Fiori
- Optional individual concert
- Dinner
- Overnight Rome



Monday, June 30

- Combined rehearsal
 - Guided tour of the Vatican Museums, including the Sistine Chapel, with its breathtaking frescos by Michelangelo, and the Raphael Rooms, which established Raphael's reputation in Rome
 - Sing Mass at St Peter's Basilica (tbd)
 - Dinner
 - Overnight Rome
-

Tuesday, July 1

- Guided walking tour of Ancient Rome. See the Capitoline Hill, Citadel of ancient Rome, the Tarpeian Rock, the Roman Forum, and the Colosseum
 - Gala Concert in Rome (venue tbd)
 - Dinner
 - Overnight Rome
-

Wednesday, July 2

- Depart for home
- OR Pre/Post tour to Florence and Venice

***Itineraries subject to change.*

***Confirmation of performances is dependent upon early receipt of performance information: biographies, pictures, recordings and repertoire*



EXTENSION TOUR

PRE/POST TOUR TO FLORENCE

Day A

- Travel to Tuscany region
- Sightseeing en route
- Check in
- Dinner
- Overnight Tuscany region

Day B

- Travel to Florence. Florence is a city in which Italian artistic and intellectual genius flourished. Dante, poet and historian, painter, architect and sculptor found the city to be an ideal forum for their intellectual and artistic development
- Guided tour of Florence. Visit the Piazza Del Duomo, Palazzo Vecchio, Piazza della Signoria and view Michelangelo's David
- Dinner
- Overnight Tuscany region

Day C

- Guided visit of Pisa located on the Arno River on the Ligurian Sea. The city is known worldwide for its famous bell tower

OR Travel to Lucca surrounded by massively thick 16th century walls, featuring some of Italy's finest medieval and Renaissance architecture, superb dining, antique markets, classical and rock music festivals

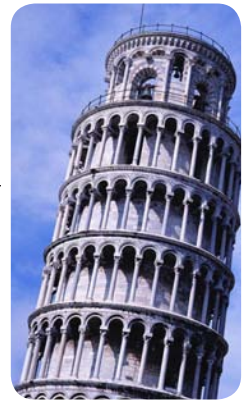
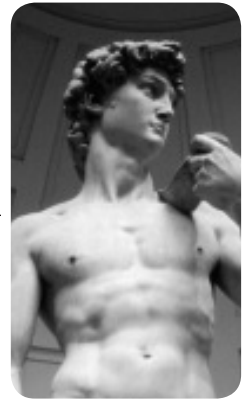
- Optional individual concert
- Dinner
- Overnight Tuscany region

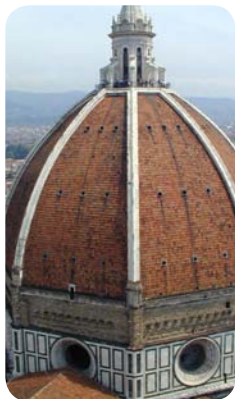
Day D

- Depart for home

***Itineraries subject to change.*

***Confirmation of performances is dependent upon early receipt of performance information: biographies, pictures, recordings and repertoire*





PRE/POST TOUR TO FLORENCE/VENICE

Day A

- Travel to Tuscany region
- Sightseeing en route
- Check in
- Dinner
- Overnight Tuscany region

Day B

- Guided tour of Florence. Visit the Piazza Del Duomo, Palazzo Vecchio, Piazza della Signoria and view Michelangelo's David
- Optional individual concert
- Dinner
- Overnight Tuscany region



Day C

- Guided visit of Pisa located on the Arno River on the Ligurian Sea. The city is known worldwide for its famous bell tower
- Continue to Mestre
- Check in
- Dinner
- Overnight Mestre

Day D

- Enjoy a guided visit of the historical center of Venice: the golden Basilica of St. Mark, the Doge's Palace decorated by 16th century artists such as Titian and Tintoretto, the Bridge of Sighs and Piombi Prison
- Optional individual concert
- Dinner
- Overnight Mestre



Day E

- Depart for home

***Itineraries subject to change.*

***Confirmation of performances is dependent upon early receipt of performance information: biographies, pictures, recordings and repertoire*



Klconcerts announces expanded coverage & new lower premiums to increase your travel protection

The coverage in the policy is set out fully in the full Travel Insurance Certificate that can be seen online at www.tripmate.com/wpF390v or that Klconcerts can send you.

SOME HIGHLIGHTS:

CANCEL FOR ANY REASON BENEFIT

If You cancel Your Trip for any reason not otherwise covered by this policy, We will reimburse You for 75% of the unused non-refundable prepaid expenses for Travel Arrangements You paid for Your Trip, provided: 1) payment for this plan is received by Klconcerts within 14 days of Your initial deposit/payment for Your Trip; and 2) You cancel Your Trip two (2) days or more before your Scheduled Trip Departure Date.

This Cancel For Any Reason Benefit does not cover: 1) penalties associated with any air or other travel arrangements not provided by Klconcerts; or 2) the failure of Klconcerts to provide the bargained-for Travel Arrangements due to cessation of operations for any reason.

OTHER REASONS FOR CANCELLATION

If you cancel your Trip for a covered reason, you will be reimbursed for the amount of the unused non-refundable prepaid expenses for Travel Arrangements you paid for your Trip. They will pay your additional cost as a result of a change in the per person occupancy rate for prepaid travel arrangements if a Traveling Companion's Trip is canceled for a covered reason and your Trip is not canceled.

TRIP INTERRUPTION

The company will pay benefits if you have to interrupt your trip for covered reasons.

TRAVEL DELAY

- If your trip is delayed for 12 hours or more for covered reasons, the company will reimburse you up to \$150 per day up to a maximum of \$750 for reasonable accommodation expenses incurred by you for hotels, meals, telephone calls and local transportation while you are delayed.
- Subject to certain conditions, the company will reimburse you, less any amount paid or payable from any other valid and collectible insurance or indemnity, up to \$1,500 for direct loss, theft, damage or destruction of your Baggage, passports or visas during your Trip.
- The company will reimburse you, less any amount paid or payable from any other valid and collectible insurance or indemnity, up to \$150 per day to a maximum of \$300, for the cost of reasonable additional clothing and personal articles purchased by you, if your Baggage is delayed for 24 hours or more during your Trip.

TRAVEL INSURANCE PLAN

MEDICAL EXPENSE/EMERGENCY ASSISTANCE

| | |
|--|----------|
| Accidental Death and Dismemberment | \$25,000 |
| Medical Expense/Emergency Assistance | |
| Accident & Sickness Medical Expenses | \$25,000 |
| Emergency Medical Evacuation. | \$50,000 |
| Repatriation of Remains. | Included |

WAIVER OF THE PRE-EXISTING CONDITION EXCLUSION

The Pre-Existing Condition Exclusion is waived if payment for this plan is received by Klconcerts within 14 days of your initial deposit/payment for your Trip.

Please Note: This policy may not be purchased after you have made final payment for your Trip.

ONE CALL

A 24-hour worldwide service for medical emergencies, transmitting emergency messages, arranging emergency cash transfer, replacing lost travel documents including tickets and passports.

CONDITIONS AND LIMITATIONS

Certain exclusions and limitations apply and are detailed in the “Travel Insurance Certificate”. For example, coverage does not apply to: any Sickness or condition of you, a Traveling Companion or an Immediate Family Member traveling with you that existed during the 60 days prior to the effective date of the coverages (this exclusion is waived if your premium is received within 14 days of your initial deposit/payment for your Trip.)

COVERED REASONS

Other Covered Reasons, as defined, includes the following events or their consequences: Cancellation or Interruption of your Trip due to: Inclement Weather, unannounced Strike, mechanical breakdown that causes complete cessation of services of Your Common Carrier for at least 12 consecutive hours; a documented traffic accident while enroute to departure; being hijacked or quarantined; jury duty; destruction of your home or destination by fire, flood, burglary or natural disaster; being called to the emergency service of government to provide aid or relief in the event of a natural disaster; a documented theft of passports or visas or a transfer of employment of 250 miles or more; Involuntary Job Termination (must be employed with same employer for 1 year); a Terrorist Incident which occurs in your departure city which is a scheduled destination for your Trip provided the Terrorist Incident occurs within 30 days prior to the Scheduled Departure Date for your Trip or Revocation of military leave due to war.

The Travel Protection Plan is underwritten by: US Fire Insurance Company, Eatontown, NJ. Benefits are administered by: Trip Mate, Inc.* 9225 Ward Parkway, Suite 200, Kansas City, Missouri, 64114, 800-888-7292 (*In CA, dba Trip Mate Insurance Agency).

Klconcerts Plan F390v.
www.tripmate.com/wpF390V

PRODUCERS

For over 30 years, **Klconcerts** (Kingsway International) has provided Choirs and instrumental ensembles with affordable and unforgettable international and domestic custom tours and festivals. Klconcerts combines unique destinations, awe-inspiring venues, warm audiences with renowned composers, educators, conductors and musicians. Together with our talented local concert tour organizers we facilitate a deep sharing of culture...the essence of performance travel.

Performance travel has always presented challenges requiring a myriad of details to combine in order for life changing magical musical moments to occur. This has never been truer than today. KI looks to partner with you in managing these challenges in new and creative ways.

Our recent clients have shared their views on our tours – have a look at [Klconcerts.com/testimonials/](https://www.klconcerts.com/testimonials/)



[Klconcerts.com](https://www.klconcerts.com)
[Facebook.com/Klchoirs](https://www.facebook.com/Klchoirs)

KI CONCERTS

3260 E. Woodmen Road, Ste. 200
Colorado Springs, CO 80920-3587
P: 719 260-0200 F: 719 598-8674